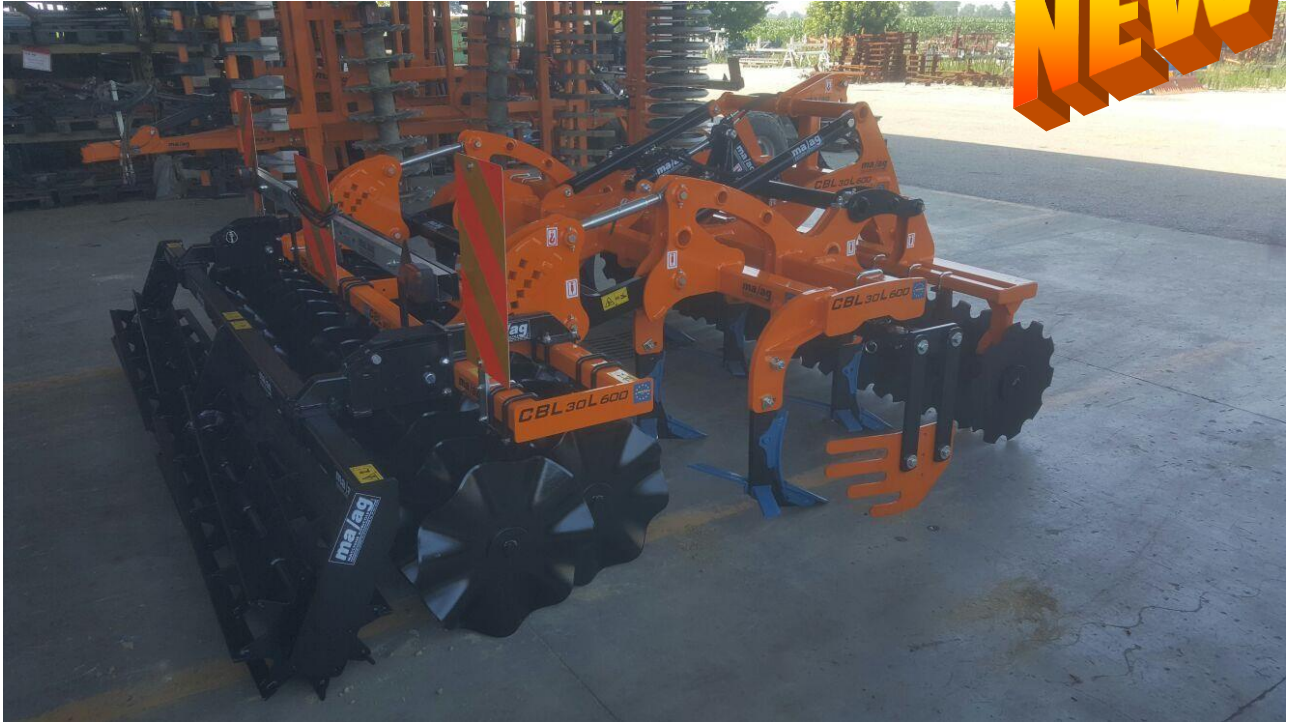


COMBINED DECOMPACTOR SUBSOILERS

“COMBILAM” SERIES CBL 25/30 – 600 – LIGHT VERSION

NEW



Equipment studied for obtaining the soil loosening and the de-compaction of the soil without the reverse of the layers. This characteristic is possible by the use of the original anchors with bending profile “Michel” patent arranged on 2 lines.

The equipment can be combined and completed with a series of tools, in front and on the rear of the ripper, in order to optimize the performances with a high reduction of working costs.

STANDARD EQUIPMENT

- III point linkage to the tractor 3° CAT.
- Kit front discs with hydraulic regulation. Steel shaft with swiveling supports with double conical bearings and interchangeable carter, *system ma/ag*.
- Soil loosening group with interchangeable anchors arranged on 2 working lines:
 - anchors “Michel” H 600 mm with safety bolt. Reversible interchangeable shares with protection.
 - “combi anchors” *Ma/ag Srl production* with quickly release shares and later wings
- KIT double corrugated breaking roller mounted on swiveling support with double conical bearings and interchangeable carter, *system ma/ag*.

Front discs + anchors "Michel" or "Combi" + double rear discs

MODEL	W. WID. m	TRANS.W. m	FRAME	ANCHORS	WEIGHT KG	HP
CBL 25/7 L 600	2,50	2,50	Fixed	7	1.750	100/130
CBL 30/9 L 600	3,00	3,20	Fixed	9	2.040	130/170

Kit single cage roller diam 340 mm tube/plate mounted on support with conical bearings

MODEL	W.WID. m	TRANS.W. m	FRAME	WEIGHT KG
CBL 25/7	2,50	2,50	Fixed	160
CBL 30/9	3,00	3,20	Fixed	260

NOTE

The "Hp" indicated may change in function of the different kind of soils, the working depth and the speed working.

